



EPISCOPAL
Impact Fund

ADVANCING PATHWAYS OUT OF POVERTY

2019

IMPACT REPORT



BE BE
JUST BE
BE AND
BRILLIANT
SHINE
STAND
BE RESILIENT

Good Samaritan
FAMILY RESOURCE CENTER, INC.
(415) 401-4253
SOCCER PROGRAM

IT'S NOT
LUCK
IT'S
SKILL

HAND IN HAND

EPISCOPAL IMPACT FUND'S COVID-19 RAPID RESPONSE

"Episcopal Impact Fund was made for times such as these."

- Katie Evenbeck, Executive Director, St. Dorothy's Rest

"I'm sitting here in shock and gratitude. We have whole families that have lost their work. Thank you again. May God bless the Episcopal Impact Fund team."

- Rev. Anna Lange-Soto, Missioner, Nuestra Señora de Guadalupe

True to our mission, Episcopal Impact Fund sprang into action to meet the new and ever-evolving challenges of the coronavirus pandemic. In the last two weeks of March alone, Episcopal Impact Fund provided almost 100 grants to congregations and nonprofits hardest hit by the crisis.

We pushed out funding to **each of our congregations and ministries** in the diocese, to be given to people who found themselves suddenly needing shelter or food because their paychecks had stopped. We also set up a **rapid response fund** to help nonprofits that faced a triple threat of increased costs, more people to serve and canceled fundraisers. For example:

- At Good Samaritan Family Resource Center, as many as 300 of their families would have run out of food without the Episcopal Impact Fund grant.
- Episcopal Community Services reached out for help housing their essential workers who were afraid to go home at the end of each exhausting shift because they live with elderly parents or family members who have compromised immune systems.
- The young mothers who live at Gilead House in Marin had lost their hourly jobs and could no longer make their modest contribution to the house expenses that keeps Gilead House solvent.

We could tell a similar story for each of the nonprofits we have sent money to since the pandemic began.

Episcopal Impact Fund's board and staff recognized the urgency of the situation and the need to act boldly, greatly exceeding our normal granting budget – in fact more than doubling it.

As the great teacher Hillel said, **"If not now, when?"**



THANK YOU

In our current time of trial, we are grateful to have laid important groundwork in 2019 that is allowing Episcopal Impact Fund to respond to our community's evolving needs.

Episcopal Impact Fund launched two new granting programs in 2019. In keeping with our belief that **a child's zip code should not predict his or her future**, our five Community Grants focused on programs that disrupt the cycle of intergenerational poverty in diverse, evidence-based ways. Some, such as Oakland Elizabeth House, get involved at the beginning of a child's life, providing supportive housing to young children and their mothers who are facing homelessness, often due to domestic violence.

Others, including Good Samaritan Family Resource Center, intervene a bit farther upstream by providing a quality **after-school program to the elementary school-aged children of low-income families**. Good Sam's program is focused on the whole child, providing academic and homework support and developing social and emotional intelligence.

Please continue reading for more details of these and our other amazing community grant recipients.

Our **Congregational Grants honor our deep Episcopal roots and the generous work our congregations do** serving their neighbors who live in poverty. We granted to eight congregation-based programs in the Diocese, most of them providing food assistance programs—either food pantries or a cooked meal served by their dedicated volunteers. Details will be found on page 8. Our congregations and their members are our most valuable resource, and we are proud to support them.

We take our duty to steward your gifts seriously by thoroughly vetting the organizations we fund. A gift to Episcopal Impact Fund gives you peace of mind that you're supporting the best in class organizations in the Bay Area doing life-changing work. **The more you give, the more we can do.** Please donate today!



Jennifer Brooks, President, Board of Directors



Kathleen Piraino, Executive Director



2019 **IMPACT REPORT**

MISSION	4
IMPACT	5
GOOD NEWS	6
RECOGNITION	11

MISSION

Episcopal Impact Fund serves organizations that address the root causes of poverty in the Bay Area. Inspired by the teachings of the gospel, we share a vision of a world without poverty.



IMPACT

91,000

Number of
People Served

\$655,814

Total Grants

28

Number of Organizations
We Support





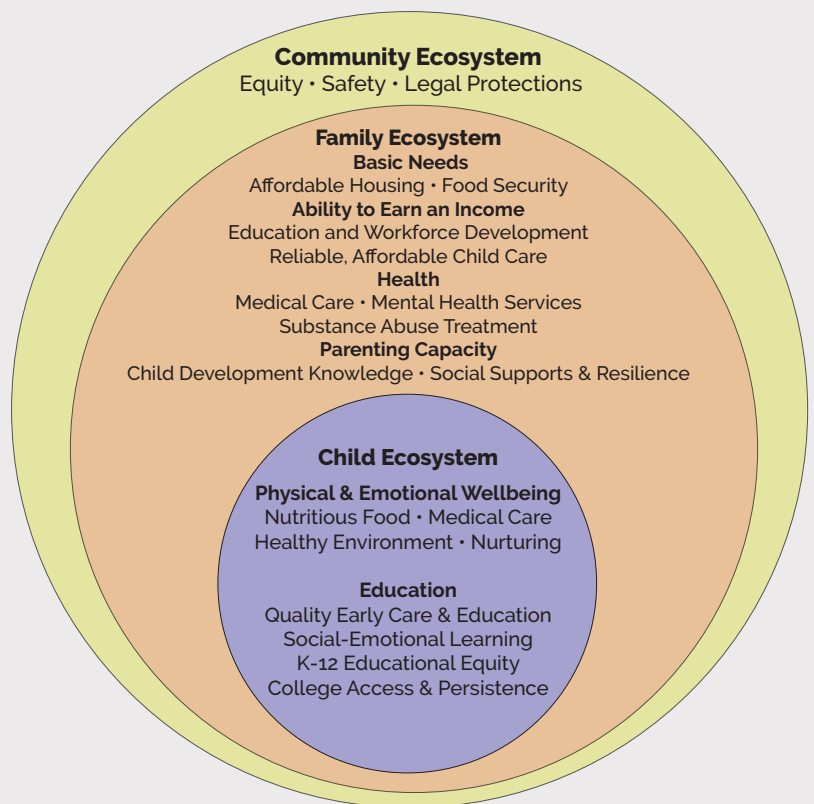
COMMUNITY

Episcopal Impact Fund is delighted to announce the first recipients of our **Community Grants Program**. At the heart of each of these organizations is an unwavering commitment to addressing intergenerational poverty in alignment with our Ecosystem for Change.

In choosing our grantees, we look for a commitment to measurable impact, continuous learning and improvement and diverse leadership. We are proud to support each of them!

- C** Community Ecosystem
- F** Family Ecosystem
- ch** Child Ecosystem

ECOSYSTEM FOR CHANGE





Center for Empowering Immigrants and Refugees (CERI) C F ch

Episcopal Impact Fund's grant supports CERI's expanding programs for young mothers and transition age youth. The Young Mothers' Program addresses the complex needs of parents from highly traumatized and isolated refugee and immigrant families. The Youth Leadership Program offers a safe space for teens who live in low-income neighborhoods and are at risk for gang involvement, school dropout, substance abuse, and sex trafficking.

The Godmothers of St. Vincent's School C ch

The Godmothers of St. Vincent's School provide enrichment, mentorship and a loving presence to boys who have emotional, behavioral, and academic challenges which cannot be met in traditional school settings and little or no family support. The grant from Episcopal Impact Fund helped the Godmothers acquire a van to provide reliable transportation to enrichment activities.

Good Samaritan Family Resource Center C F ch

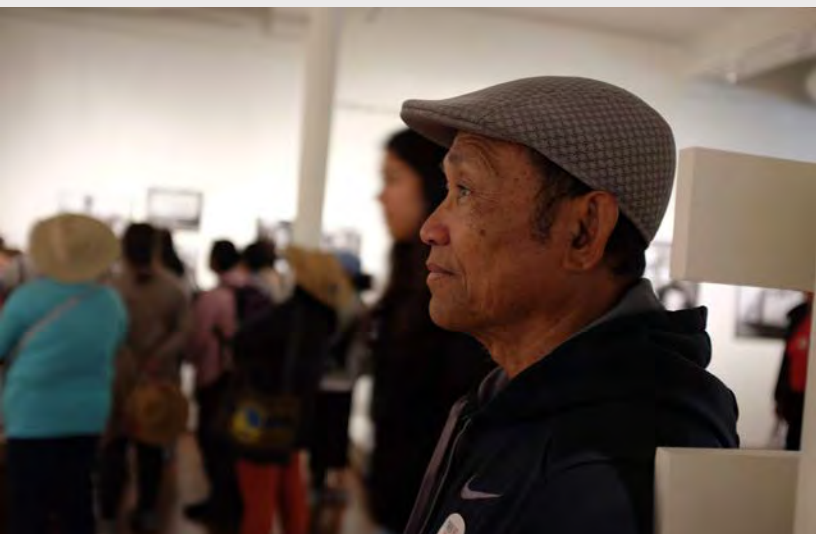
Good Sam helps vulnerable families access needed services, develop self-sufficiency, and participate fully as members of the San Francisco community. Episcopal Impact Fund supports the Vision Academy and Beacon programs which provide after-school programs for at-risk youth, focusing on academics and social-emotional enrichment and well-being.

Homeless Prenatal Program C F ch

Homeless Prenatal Program partners with pregnant women and families to break the cycle of childhood poverty. HPP provides prenatal education and parenting classes to an at-risk population of very low income or homeless women, helping to improve birth outcomes, strengthening parenting skills and transforming lives.

Oakland Elizabeth House C F ch

Oakland Elizabeth house offers temporary supportive housing to women with children who have experienced homelessness, violence, and addiction. Elizabeth House supports these families in their transition to independence by empowering them with the tools to rebuild their lives, including education, employment and wellness resources.



NEIGHBORS HELPING NEIGHBORS

Congregations know their neighborhoods and are on the front line of community change. Episcopal Impact Fund encourages congregations throughout the Bay Area to fight poverty in their own communities. These important grants start or continue critical outreach ministries for homeless and low-income neighbors.

ALL SAINTS, San Leandro, serves its neighbors with a monthly client-choice food pantry that draws more than a hundred people from the surrounding community.

CHURCH OF THE NATIVITY, San Rafael, partners with the Marin Street Chaplaincy to serve unsheltered people with a weekly meal, counseling and companionship.

ECUMENICAL INTERFAITH HOUSE at San Francisco State University runs a free drop-in lunch program for food-insecure students.

HOLY CHILD AND ST. MARTIN, Daly City, cooks and serves a monthly meal to residents of a nearby homeless shelter. The congregation also packs and distributes bag lunches to people living on the street.

HOLY FAMILY, Half Moon Bay, partners with Abundant Grace Coastside Worker to provide paid job training and other support to people experiencing homelessness.

ST. CLARE'S, Pleasanton, will launch a new program called Laundry Love in 2020, providing free laundry and other services for its homeless and low-income neighbors.

ST. JOHN THE EVANGELIST, San Francisco, partners with The Gubbio Project to provide a safe, warm and dry place for people experiencing homelessness to sleep during the day.

ST. MARY THE VIRGIN, San Francisco, cooks and serves meals to residents of the San Francisco Interfaith Shelter.

ST. PAUL'S, Walnut Creek, uses its kitchen to provide meals for many outreach programs. The Episcopal Impact Fund grant will fund health and safety upgrades.

ST. GREGORY OF NYSSA, San Francisco, holds a weekly food pantry for up to 400 San Franciscans. The Episcopal Impact Fund grant will help fund needed facility upgrades.



STORIES

CENTER FOR EMPOWERING REFUGEES AND IMMIGRANTS - CERI

Every Monday morning, Kanley and Thavery, two young outreach workers at CERI, meet as a group with 10 other young Cambodian American moms. **With the support of Episcopal Impact Fund, CERI was able to start a support group for young mothers, all daughters of Khmer Rouge genocide survivors.** Some dropped out of high school, others got involved with drugs and alcohol or crime, and some fell prey to underground sex trafficking as teens.

Now, driven by the desire to create a different life for their children, they are determined to rebuild their lives and heal their relationships with their parents, enhance their own parenting skills, and explore educational and career goals. **Through its multi-generational community mental health model, CERI presents a lifeline—both for survivors and their families—empowering clients to heal deep-seated trauma and re-take control of their lives.**

- MONA AFARY, FOUNDER & EXECUTIVE DIRECTOR

GOOD SAMARITAN FAMILY RESOURCE CENTER

I was personally drawn to Good Samaritan because of the agency's values, inclusiveness, and willingness to take action on new ideas to serve the community. In time, I saw that Good Sam's DNA came from the Episcopal Church.

In fact, Good Sam was started by the Episcopal Church and has been continuously supporting vulnerable families for 126 years, with our guiding mission to help newly arrived immigrants find their way here in San Francisco. The forward-thinking of the Bishop to convert Good Sam from a church into a family resource center after the 1989 Loma Prieta earthquake gave Good Sam the ability to support our community and our families into the future.

Our long-standing partnership with Episcopal Impact Fund is critical to our work. Our staff are on the front line, fighting poverty and helping families find their way to successful outcomes, and we could not do it without EIF's support - **we are truly partners in making an impact.**

We are grateful for the generous supporters of Episcopal Impact Fund. EIF's track record of investing in meaningful and necessary programs here in the Bay Area make it one of the best managed grantmaking organizations around, and a local treasure. Thank you, Episcopal Impact Fund!

- KIAN ALAVI, DEPUTY DIRECTOR





SHARING THE LOVE

For more than 40 years, Episcopal Impact Fund has honored its heritage with additional community-focused grants based on the Episcopal values of faithfulness, inclusiveness and compassion.

Episcopal Impact Fund administers The Brotherton Fund, named after the founder of the former St. Luke's Hospital (now the Mission/Bernal Campus of CPMC). This hospital serves many low-income, uninsured and underinsured San Franciscans.

Episcopal Impact Fund is the founder and lead funder of two new programs at the hospital:

- The Perinatal Mental Healthcare Program provides critical psychiatric and psychological care to pregnant women and new mothers free of charge. By embedding this program within existing labor and delivery services, we ensure that women receive the care they need in a familiar and trusted setting.
- The Pediatric Mental Healthcare Program brings onsite, outpatient mental health care resources to low-income children and their families. Our grant enables these services to be offered free of charge to all patients.

On behalf of the Diocese of California, Episcopal Impact Fund administers four endowments that specifically serve elders, the incarcerated, and people in recovery. This year, our social ministry grants went to:

Art with Elders

Programs that celebrate the wisdom, talent and creativity of older adults living in long-term care facilities

Grace Cathedral Jail Ministry

Helping incarcerated people connect with God, themselves, each other and their families in ways that reflect love and generosity

Ohlhoff Recovery Programs

A continuum of effective, affordable treatment for drug and alcohol addiction

Sojourn Chaplaincy

Multifaith spiritual care for patients and staff at San Francisco General Hospital, including the indigent and incarcerated

LEADERSHIP

2020 BOARD OF DIRECTORS

The Rt. Rev. Dr. Marc Handley Andrus
Craig Bertero
Jennifer Brooks
The Rev. Lindy Bunch
Cecille Caterson
Marsha Dugan
The Rev. Beth Lind Foote
John Hockin
Peter Kidder
Kristy Nelson Leffers
Stephanie Lehman
Warren R. Leiden
Aaron Mullen
Catherine Pyke
Amy Quirk
Jonathan Speed
Dorothy Randall Tsuruta
Maria Vicente-Puletti
Andrew Woeber

2019 BOARD OF DIRECTORS

The Rt. Rev. Dr. Marc Handley Andrus
Craig Bertero
Jennifer Brooks
The Rev. Lindy Bunch
The Rev. Skip Bushee
The Rev. Dr. Ambrose F. Carroll, Sr.
Cecille Caterson
Alexandra Dupont Crosswell
Marsha Dugan
The Rev. Beth Lind Foote
Ernest Guzman Jr.
John Hockin
Peter Kidder
Kristy Nelson Leffers
Stephanie Lehman
Warren R. Leiden
Doug MacKay
Aaron Mullen
Catherine Pyke
Amy Quirk
Dorothy Randall Tsuruta
Maria Vicente-Puletti
Andrew Woeber

MESSAGE OF LOVE

In the very midst of the Covid-19 pandemic, Episcopal Impact Fund is embodying hope for the Bay Area. The foresight of Kathleen Piraino and the Episcopal Impact Fund board in setting aside a capacious fund for use in a disaster is making a real difference right now, one that will be remembered throughout the Bay Area.

As I write this on Maundy Thursday in Holy Week, I am holding in my heart Jesus' words to his closest friends as they gathered for their last shared meal before his arrest and execution: "I give you a new commandment, love each other with unconditional,

overflowing love, as I have loved you." This agapé love is in itself hope which is present and which points us towards a restored and healed future.



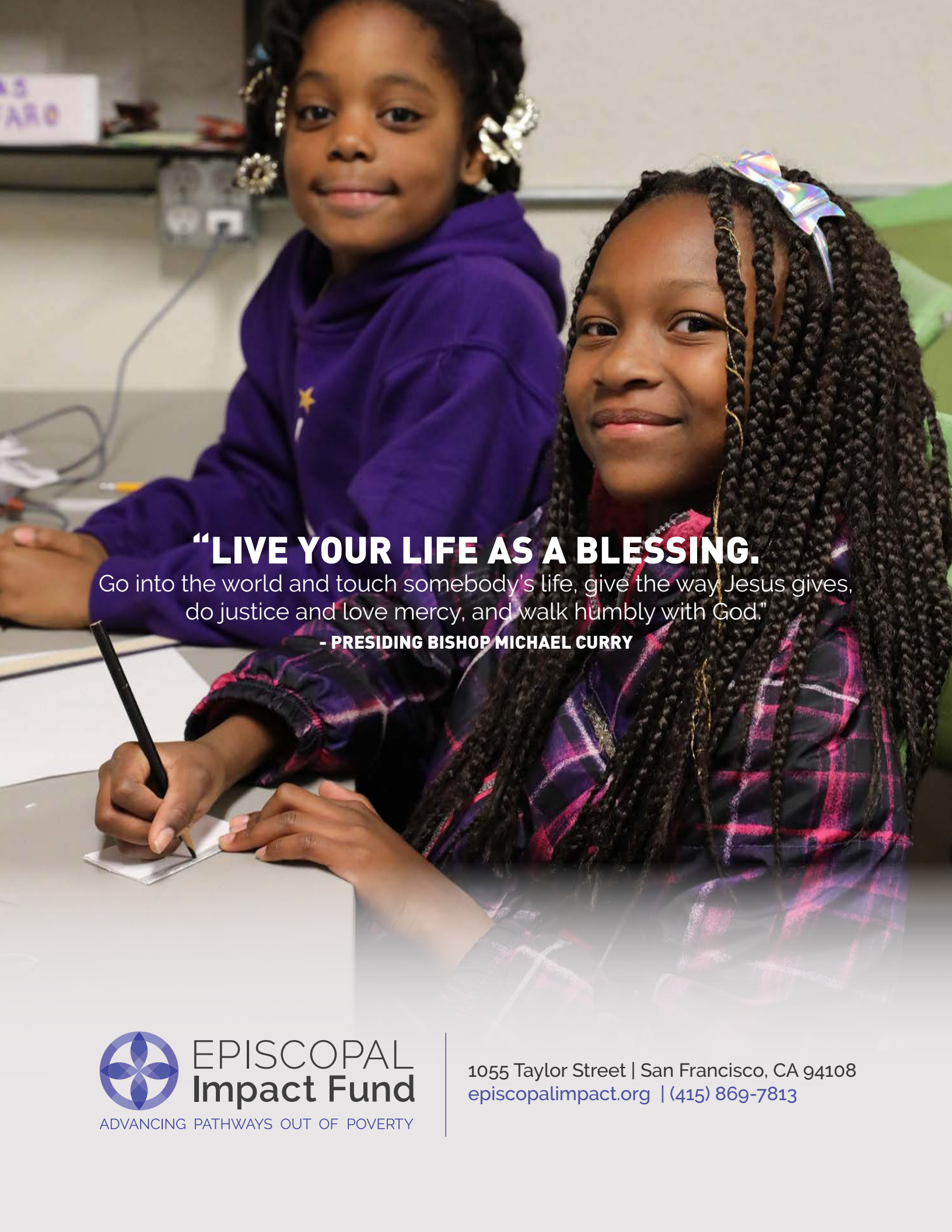
Let us so love one another.

+ Marc Handley Andrus

The Rt. Rev. Dr. Marc Handley Andrus,
Bishop of California

JOIN US!
TOGETHER WE CAN DO
SO MUCH MORE
episcopalimpact.org





“LIVE YOUR LIFE AS A BLESSING.

Go into the world and touch somebody's life, give the way Jesus gives, do justice and love mercy, and walk humbly with God.”

- PRESIDING BISHOP MICHAEL CURRY



**EPISCOPAL
Impact Fund**

ADVANCING PATHWAYS OUT OF POVERTY

1055 Taylor Street | San Francisco, CA 94108
episcopalimpact.org | (415) 869-7813